



Single User

Installation Guide



Copyright 2012, Canto GmbH. All rights reserved.

Canto, the Canto logo, the Cumulus logo, and Cumulus are registered trademarks of Canto, registered in the U.S. and other countries.

Apple, Mac, Macintosh and QuickTime are registered trademarks of Apple Computer, Inc. , registered in the U.S. and other countries.

Microsoft, Windows, Windows Vista, and Windows NT are either trademarks or registered trademarks of the Microsoft Corporation in the U.S. and other countries.

Other third-party product and company names mentioned in this document are trademarks or registered trademarks of their respective holders.

Feedback?

Tell us what you think about this manual. We welcome all of your comments and suggestions.

Please e-mail comments to **techdoc@canto.com**

or via fax at **+49-30-390 48 555**.

Installing Single User

Canto provides installer utilities to help make the process of installing Single User trouble-free. This guide provides instructions for installing Single User on all supported platforms.

NOTE:

Most likely, you will get the Single User installers packed in a .zip file which is named according to a standard scheme:

<product name>_<version number>_<operating system>.zip, e.g.

SingleUser_860_Win.zip or SingleUser_860_MacOSX.zip. You have to unpack the .zip file in order to start the installation process.

System Requirements

Canto provides two levels of system requirements: *minimum* and *recommended*. Using the program on a system that falls beneath the minimum requirements may be possible, but it will most likely yield unfavorable results and is not recommended. Recommended requirements are listed below in brackets.

Windows

- Windows 7 (SP 1 and latest patches), Windows Vista™ (SP 2 and latest patches), Windows XP (SP3 and latest patches), Windows Server™ 2003 (SP1 and latest patches), or Windows Server™ 2008 (and latest patches)
- 1024 x 768 video display
- 500 MB free hard disk space for installation
- 1 GB (2 GB) of available RAM
- QuickTime 7 (or later), standard installation, required for certain features





Mac OS X

- A Mac computer with an Intel processor
- Mac OS X version 10.6/10.7 (latest patches recommended) or Mac OS X Server version 10.6/10.7 (latest patches recommended)
- 1024 x 768 video display
- 500 MB free hard disk space for installation
- 1 GB (2 GB) of available RAM
- QuickTime 7 (or later), standard installation, required for certain features

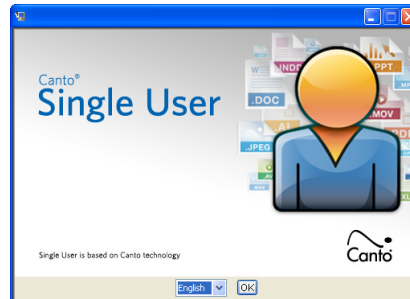
Installation

To install Single User under Windows and Mac OS X:

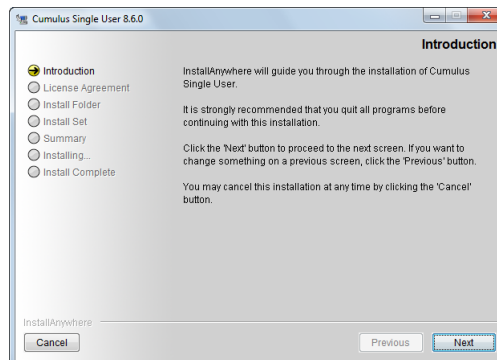


1.  Log on to the local machine as the *Administrator* for the machine.
 Log on to local machine.
2.  Double-click **Install_Cumulus_8_Single_User.exe**.
 Under Windows Vista/7 you may be requested to allow the start of the installer.
 Double-click **Install Cumulus 8 Single User**.

The installation resources are extracted and you are asked to select a language (for the installation process and for the default language of the application).



3. Select a language and click **OK**. The installer is launched.



4. When the Introduction screen is displayed, click **Next** to continue, then follow the instructions on the subsequent screens. It is recommended to adopt the given suggestions.

The installation process will take some time.

5. When the installation is finished, the **Install Complete** window is displayed. Click **Done** to end the installation and close the window.

After installation the application is running in demo mode (limited to 2 catalogs with 100 records each). To run it in normal mode you have to license the product. (To purchase the product find your vendor via www.MyDigitalAssetManagement.com.)

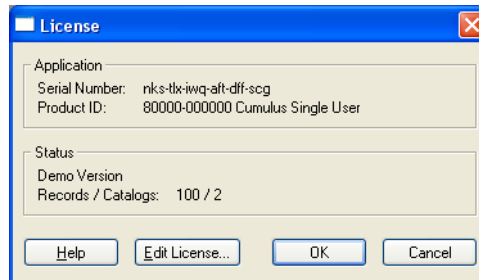
Product Licensing

To run the application in normal mode you have to enter the serial number license information you received from your vendor.

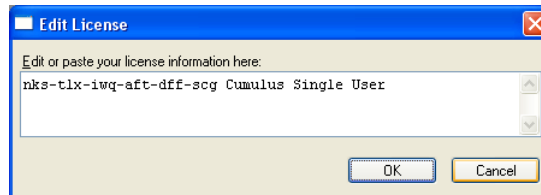
To enter your serial number license information:



1. Launch the application:
 - Click the Start button, point to **Programs**, select **Cumulus 8** and then **Cumulus Single User**
 - Double click the **Cumulus** application icon inside the **Cumulus Single User** folder in the **Applications** folder.**Single User** is started.
2. To open the license dialog, select **Help > License**. The **License** window appears, displaying information about the current license.



3. Click **Edit License**. The **Edit License** window opens.



4. Replace the text in this window with the serial number you received from your vendor and click **OK** to confirm.
The **Edit License** window closes and the new status of your Canto software is displayed.
5. Click **OK** to return to the application.

Your Canto software will now run without any limitations. If you need support, contact your vendor: www.MyDigitalAssetManagement

Going on

The full range of Canto Cumulus Single User functions is described in the user guide (provided in PDF format) or in the help system. You can access the help system via the **Help** menu, the **F1** key or the **Help** buttons provided in the application. Subjects are organized by contents and index, and are searchable. The help system is based on HTML pages that can be viewed with any standard Web browser with activated JavaScript. However, if you employ any pop up blockers, the display of the help system may not be possible. Deactivate the pop up blockers to have the help system displayed.

